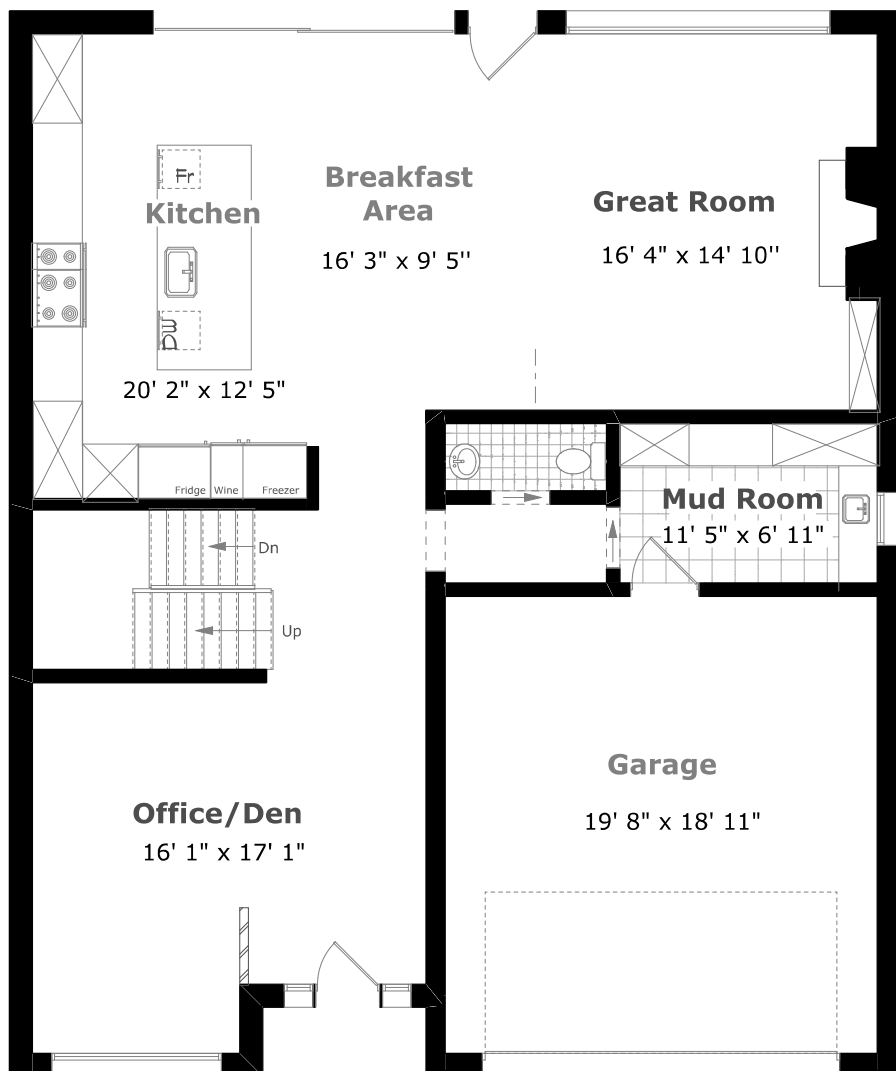


# 344 Spruce Street

Scale (ft) 0 5 10 15 20 25

Scale (M) 0 1 2 3 4 5 6 7

January 2023



## Main Floor Plan

1,353.1 sq. ft. +

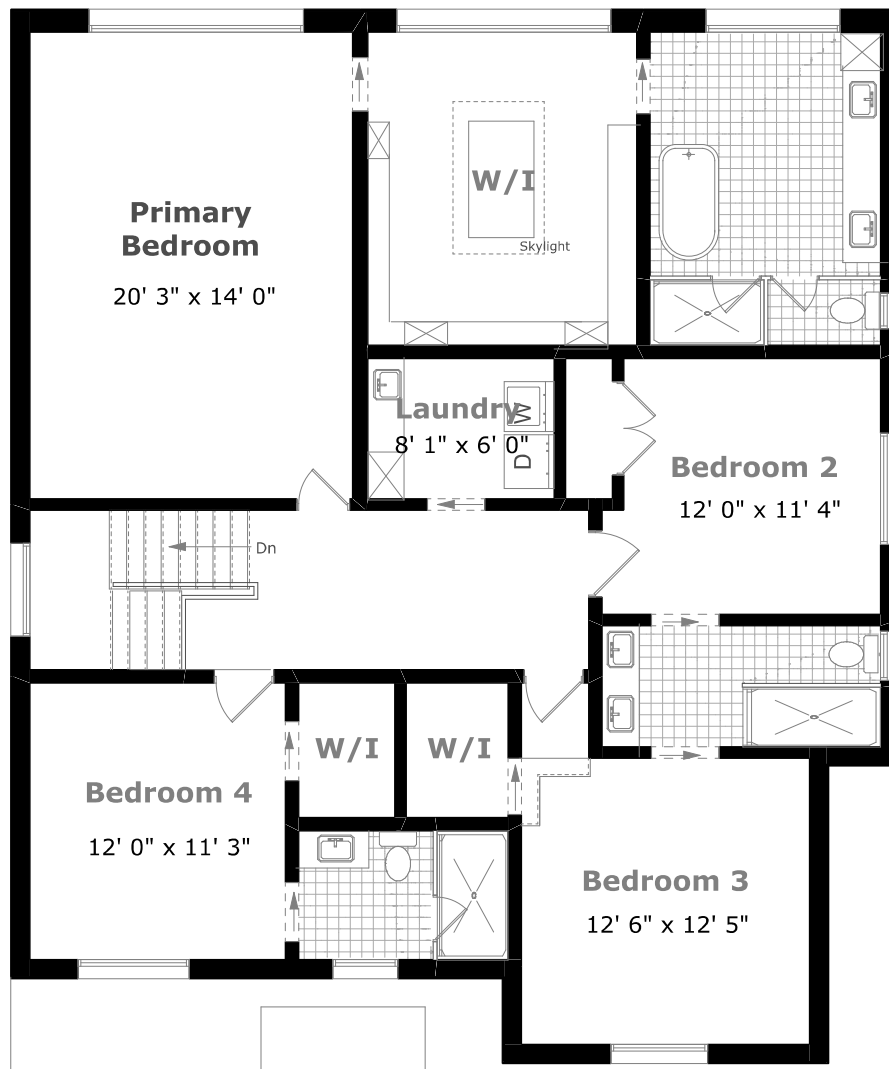
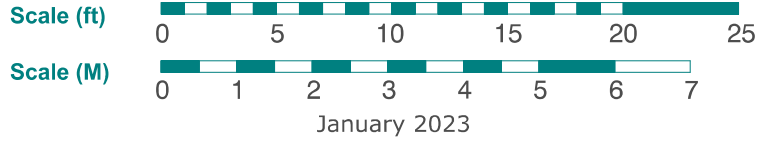
407.2 sq. ft. (Garage)

10' 0" Ceiling



Measurements may not be 100% accurate. Floor Plans provided for illustrative purposes only. Room sizes not used to calculate area.

# 344 Spruce Street



## 2nd Floor Plan

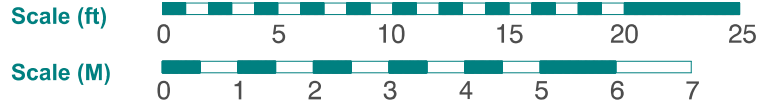
1,647.5 sq. ft.

9' 11" Ceiling

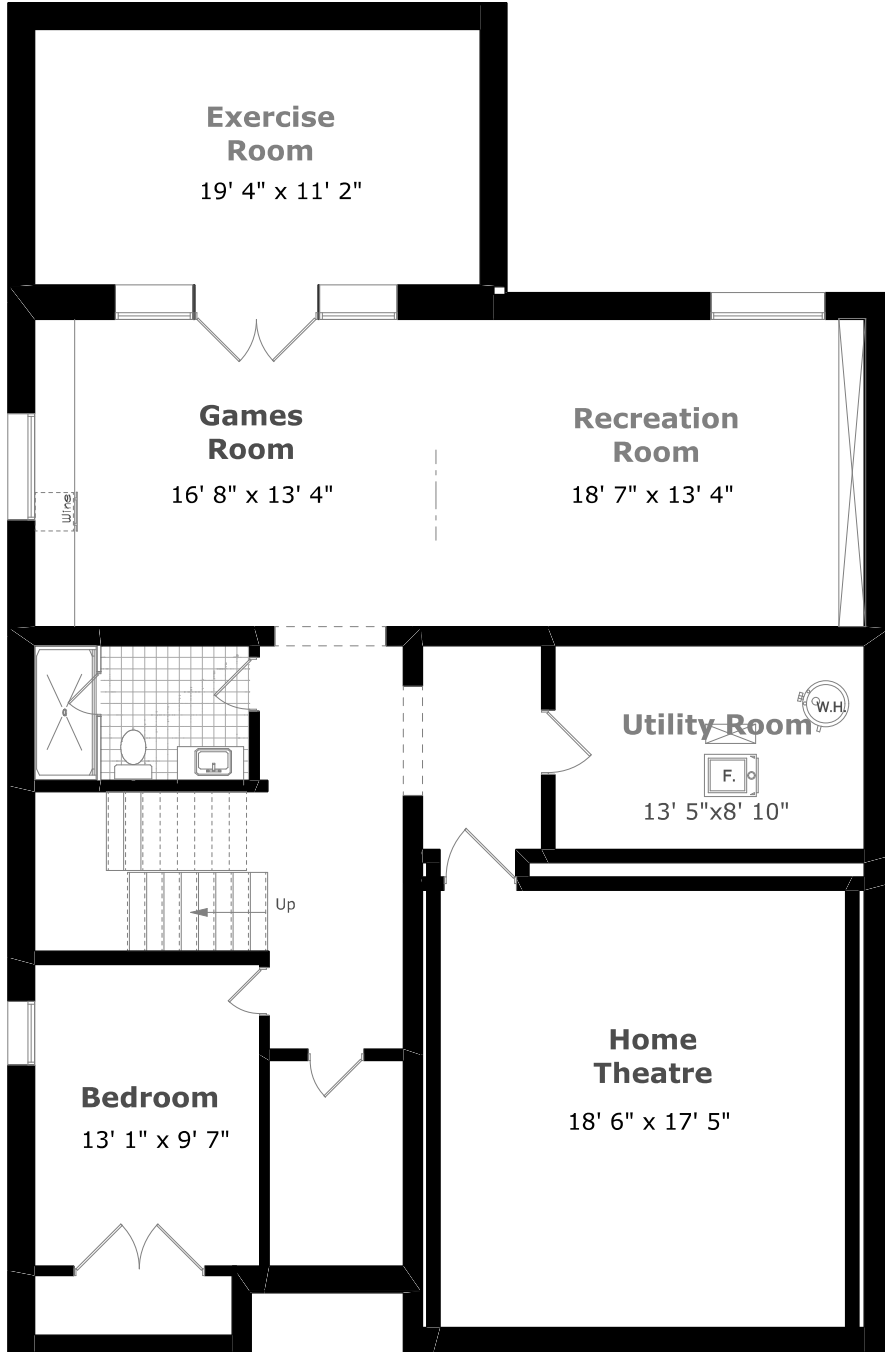


Measurements may not be 100% accurate. Floor Plans provided for illustrative purposes only. Room sizes not used to calculate area.

# 344 Spruce Street



January 2023



## Lower Level Plan

2,021.6 sq. ft. +

9' 7" Ceiling



Measurements may not be 100% accurate. Floor Plans provided for illustrative purposes only. Room sizes not used to calculate area.